

A large cruise ship, the 'Divona', is shown from a side profile, sailing on dark water. The ship is white with a dark hull and has a prominent mast with various antennas. In the background, a towering, jagged glacier wall rises vertically, its surface showing distinct horizontal layers of ice. The sky is a clear, pale blue.

# Alaska 24x7

**James Hamilton ([jrh@mvdirona.com](mailto:jrh@mvdirona.com))**  
**Jennifer Hamilton ([jennifer@mvdirona.com](mailto:jennifer@mvdirona.com))**

**[blog.mvdirona.com](http://blog.mvdirona.com)**  
**[www.mvdirona.com](http://www.mvdirona.com)**

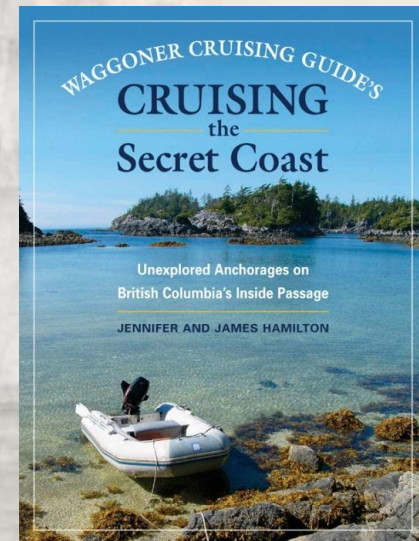
A background image showing a boat on the water in front of a large, jagged glacier. The text is overlaid on this image.

# Agenda

- **Background and experiences**
- **Offshore run**
- **Boat preparation & useful rigging**
- **SE Alaska highlights**

# Boating background

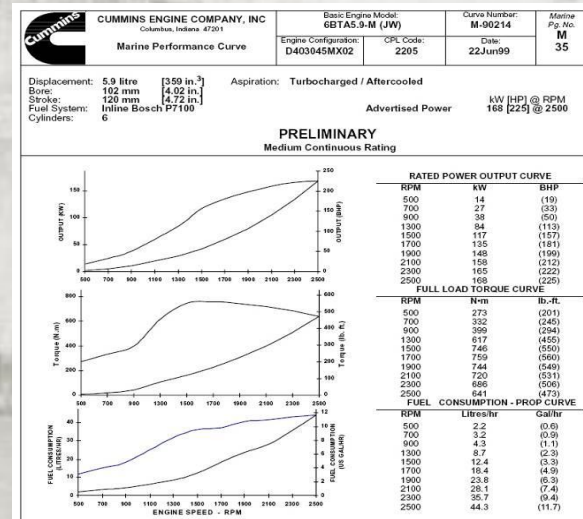
- **Boat year-round in PNW**
  - **Summer:** west & north of Vancouver Island
  - **Winter:** up to Broughtons
  - **Live aboard in Seattle**
- **Explore & document little-publicized destinations**
- **Enjoy independence, flexibility & self-sufficiency**





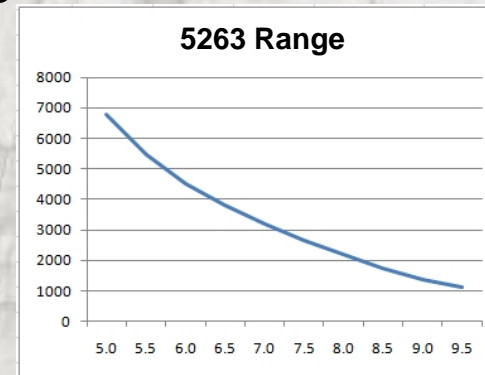
# Previous Boat

- Bayliner 4087
  - Cummins 270B Diesels
  - 4,100 trouble-free hours over 11 yrs
  - Solid coastal cruiser, but no passage-maker
- Specifications
  - 77 gallons water
    - +20 gal portable
    - No water maker
  - 220 gallons diesel
  - Cruise speed 15 knots
    - 17 GPH
    - Range: ~12 hours & 180 nm
  - Low cruise 7.75 knots
    - < 3 GPH
    - Range: 55 hours, 425 nm



# ***Dirona***

- **2010 Nordhavn 52**
  - Delivered Feb, 2010
  - 780 hours on main engine
- **Specifications**
  - Main: Deere 6068AFM75
  - Wing: Lugger L844D
  - Diesel: 1860 gallons
  - Water: 400 gallons
  - LOA: 54' 4"
  - Beam: 16' 1"
  - Draft: 6' 6"
  - Displacement: 110,000 lbs



A background image showing a boat on the water in front of a large, jagged glacier. The text is overlaid on this image.

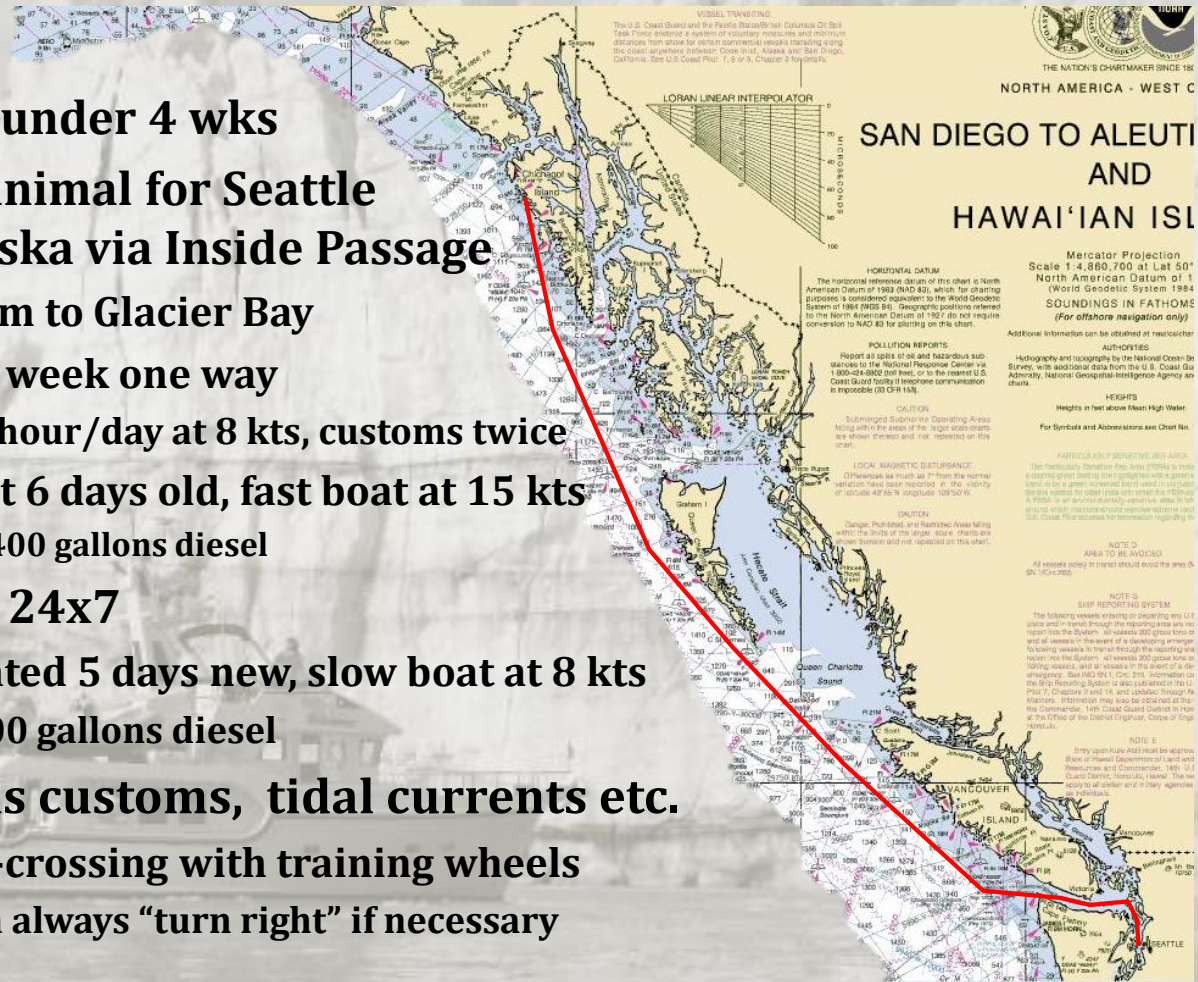
# Agenda

- **Background and experiences**
- **Offshore run**
- **Boat preparation & useful rigging**
- **SE Alaska highlights**



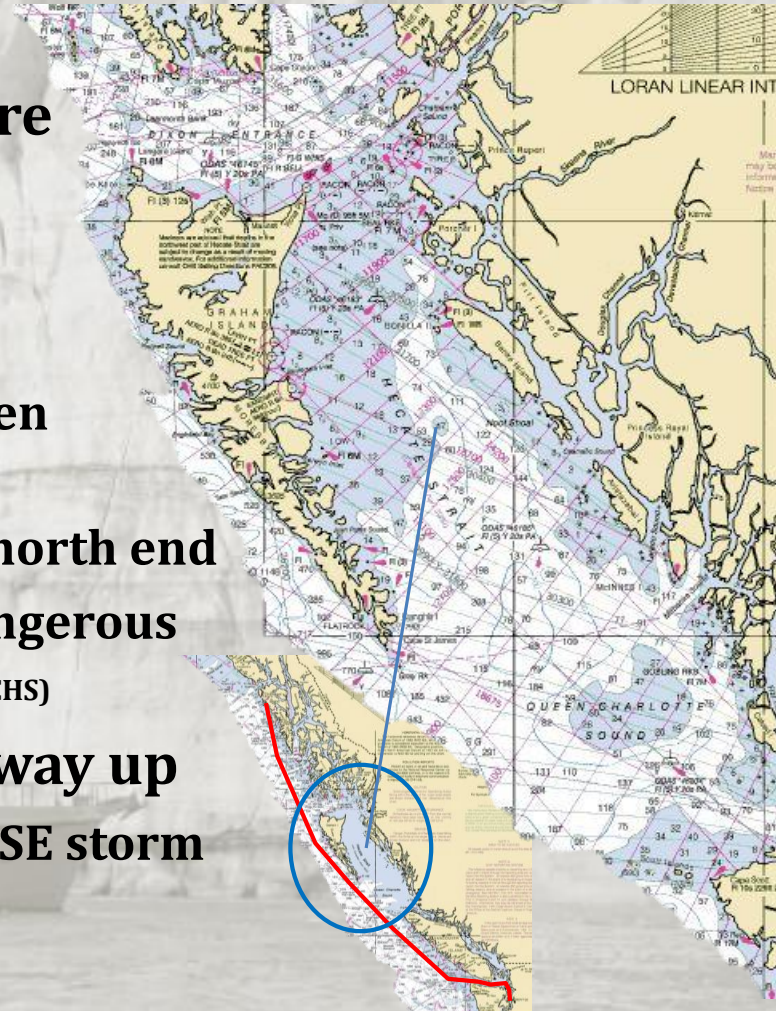
# Choosing to run offshore

- We have under 4 wks
- 6 wks minimal for Seattle to SE Alaska via Inside Passage
  - 1000nm to Glacier Bay
  - Over a week one way
    - 14-hour/day at 8 kts, customs twice
  - At least 6 days old, fast boat at 15 kts
    - ~1,400 gallons diesel
- Offshore 24x7
  - Estimated 5 days new, slow boat at 8 kts
    - ~900 gallons diesel
  - Avoids customs, tidal currents etc.
  - Ocean-crossing with training wheels
    - Can always “turn right” if necessary



# Route selection

- **Ran 15-50 miles offshore entire way up**
- **Hecate Strait**
  - 160-miles long between Vancouver Island & Queen Charlotte Islands
  - Shallow, particularly at north end
  - Reported as 4<sup>th</sup> most dangerous body of water in world (CHS)
- **Considered Hecate for way up**
  - Took on return through SE storm
  - Will avoid it in future





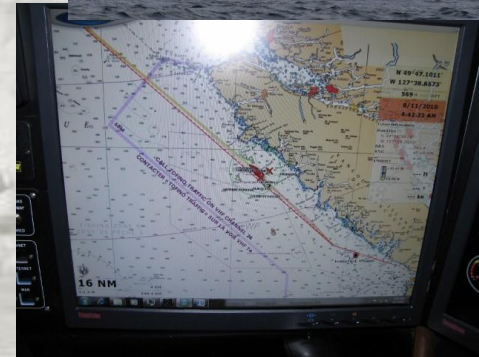
# Weather and other conditions

- **Gale-warning Strait of Juan de Fuca first night out & Hecate Strait on return south**
  - Both were wind/waves on the bow
  - Down to 4.5 knots at times to reduce pitching
- **Large swells, especially Dixon Entrance**
- **Frequent thick fog**
- **Little wood/debris in water**
  - One large float off Dixon Entrance
  - Numerous floats north end of Hecate Strait
- **Out of VHF contact through Queen Charlotte Sound**
  - 100-mile crossing, 80 miles off mainland shore



# Vessel Traffic

- Mostly in Strait of Juan de Fuca and off Barkley Sound (SW Vancouver Island)
- Little traffic otherwise until near Sitka
  - Occasional fishing vessel or cargo ship
  - Cruise ships in clusters
  - Majority broadcasting AIS
- Canadian Coast Guard airplane reconnaissance



# Watchkeeping

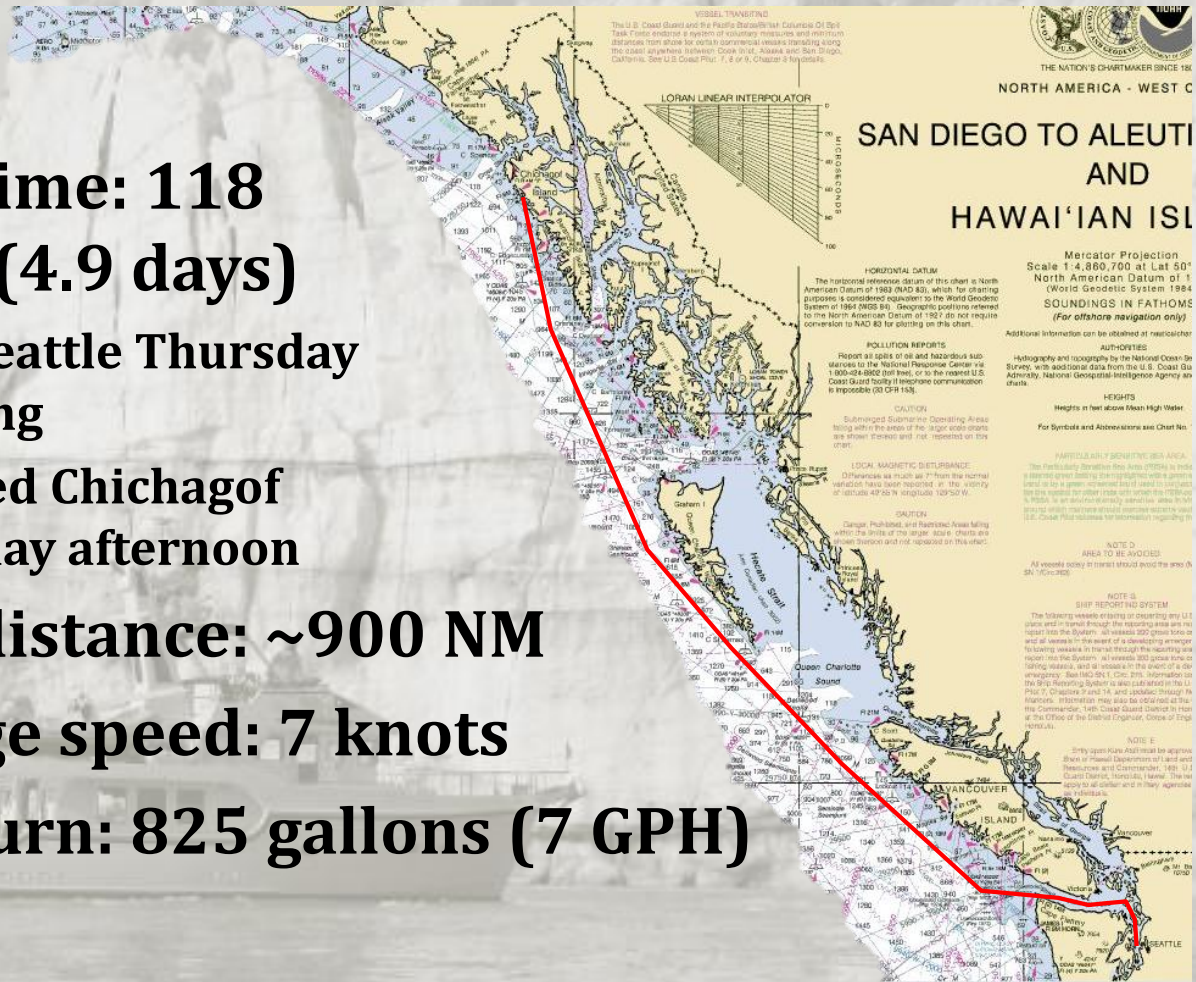
- **Someone awake & at helm at all times**
  - 3 formal 4-hour shifts at night
    - 8pm-12am, 12am-4am, 4am-8am
  - Informal during day
- **Slept mostly in off-watch berth**
- **When pitching severe used master stateroom below**
  - Off-watch berth athwartship
  - Stateroom berth fore-and-aft & lower in boat
- **Engine room checks every 4 hrs**





# Offshore run stats

- **Total time: 118 hours (4.9 days)**
  - Left Seattle Thursday evening
  - Arrived Chichagof Tuesday afternoon
- **Total distance: ~900 NM**
- **Average speed: 7 knots**
- **Fuel burn: 825 gallons (7 GPH)**



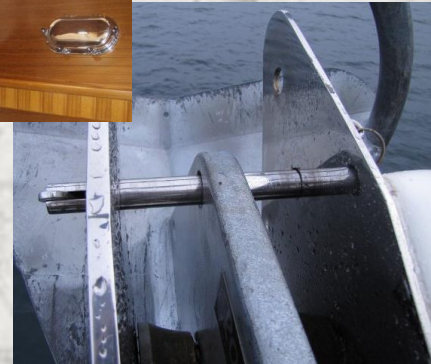
The background of the slide is a grayscale photograph of a large, jagged glacier wall. In the foreground, a dark-colored boat is visible on the water, partially obscured by the text. The overall scene is serene and majestic.

# Agenda

- **Background and experiences**
- **Offshore run**
- **Boat preparation & useful rigging**
- **SE Alaska highlights**

# Heavy weather preparation

- Storm windows/deadlights
- Pin anchor
- Extra latches on heavy drawers
- Ratchet straps secure heavy items
  - On deck, engine room & laz
- Refrigerator bars
- Bubble wrap/nerf balls for galley lockers





# Offshore run useful rigging

- Good radar with AIS & ARPA
- Red lights in PH, day head, galley
- Shields on steaming/flood lights
- Able to view any helm screen in master stateroom
- Intercom between PH/master
- Night covers for LCD screens
- Dimmable displays on PH control panels



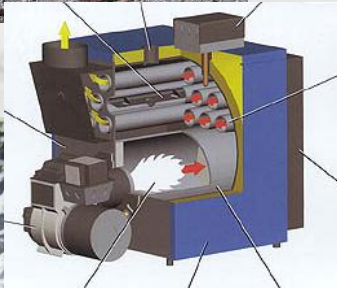
# Offshore run useful rigging

- **Offwatch berth**
  - Sleeping mask
  - Needed pad/proper sized fitted sheet
- **Day head**
- **Active stabilizers**
  - Extra grab rails
- **John Deere 6068AFM75 main**
  - 266 HP (231 HP continuous duty)
  - Much of run at 2000 RPM (165 HP)
  - N52 standard engine is 165 HP intermittent duty



# SE Alaska useful rigging

- 500' 7/8" chain
- Hydraulic:
  - Windlass
  - Bow & stern thrusters
  - Emergency bilge pump
- Diesel furnace
- Anchor buddy/250' tie line for dinghy
- FLIR for dodging ice



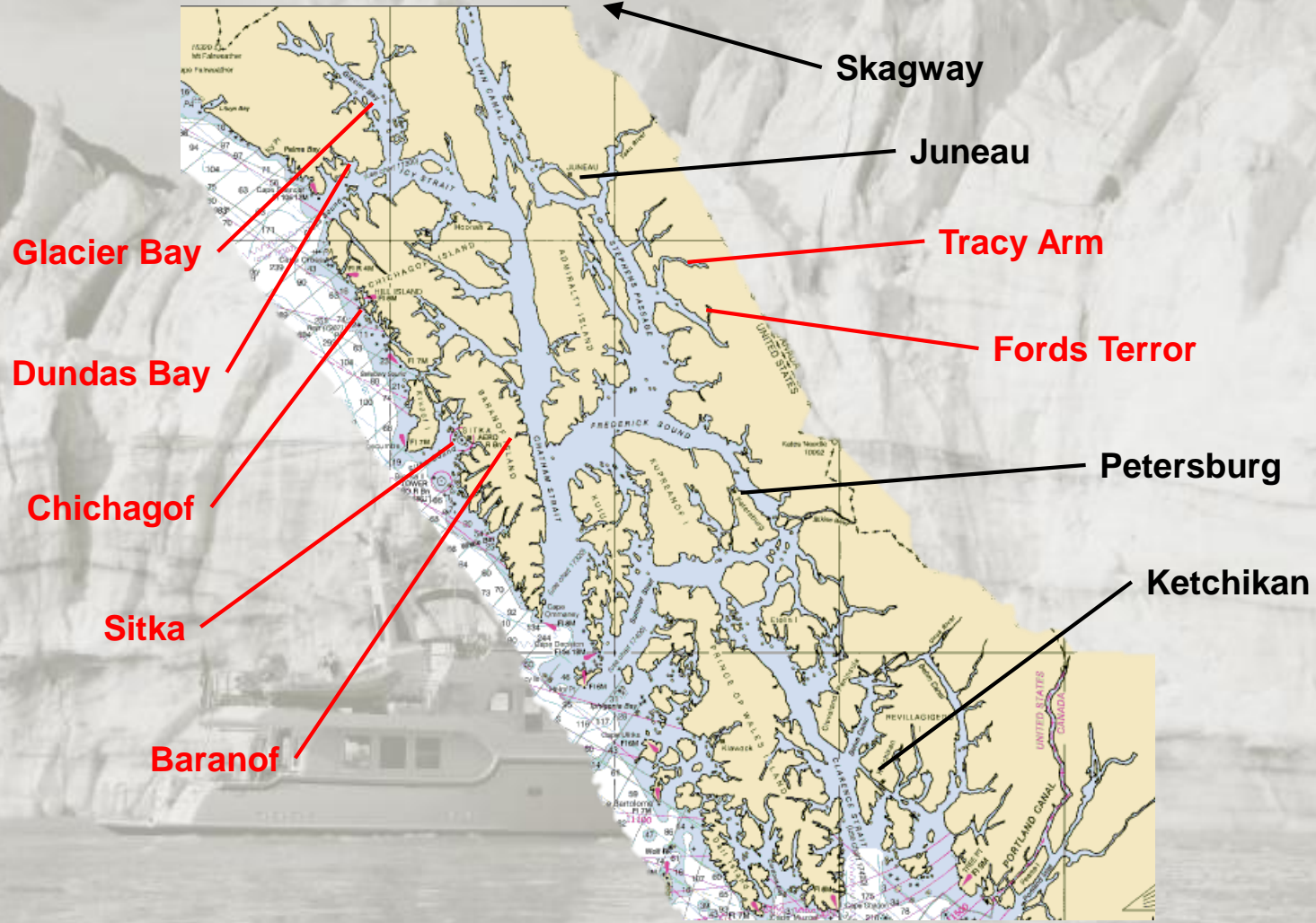


The background of the slide is a grayscale photograph of a large, multi-story cruise ship or expedition vessel docked in front of a massive, jagged glacier. The ship is positioned in the lower third of the frame, and the glacier fills the upper two-thirds, with sharp peaks and deep crevasses. The overall tone is professional and adventurous.

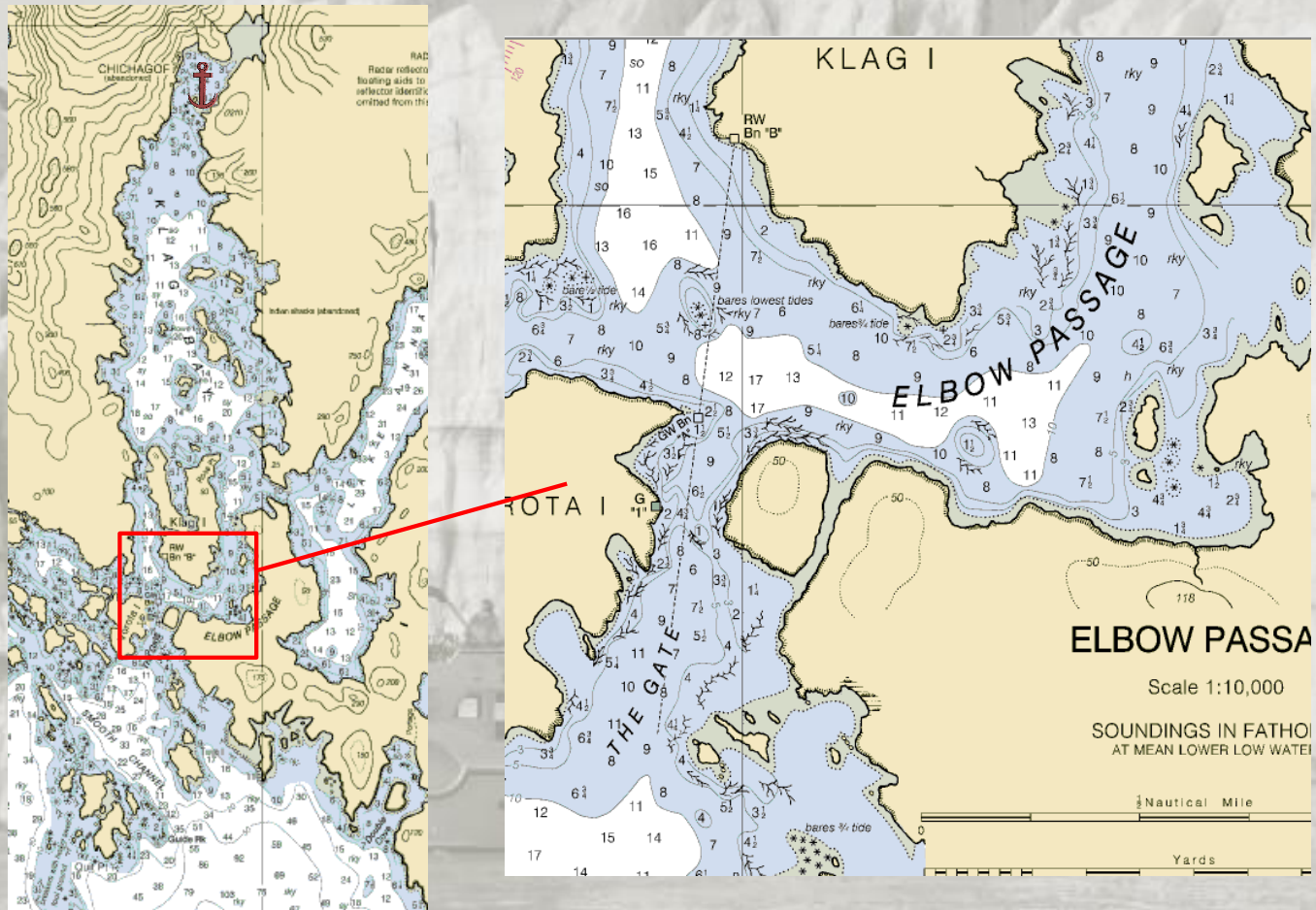
# Agenda

- **Background and experiences**
- **Offshore run**
- **Boat preparation & useful rigging**
- **SE Alaska highlights**

# SE Alaska highlights



# Chichagof/Klag Bay





# Chichagof/Klag Bay

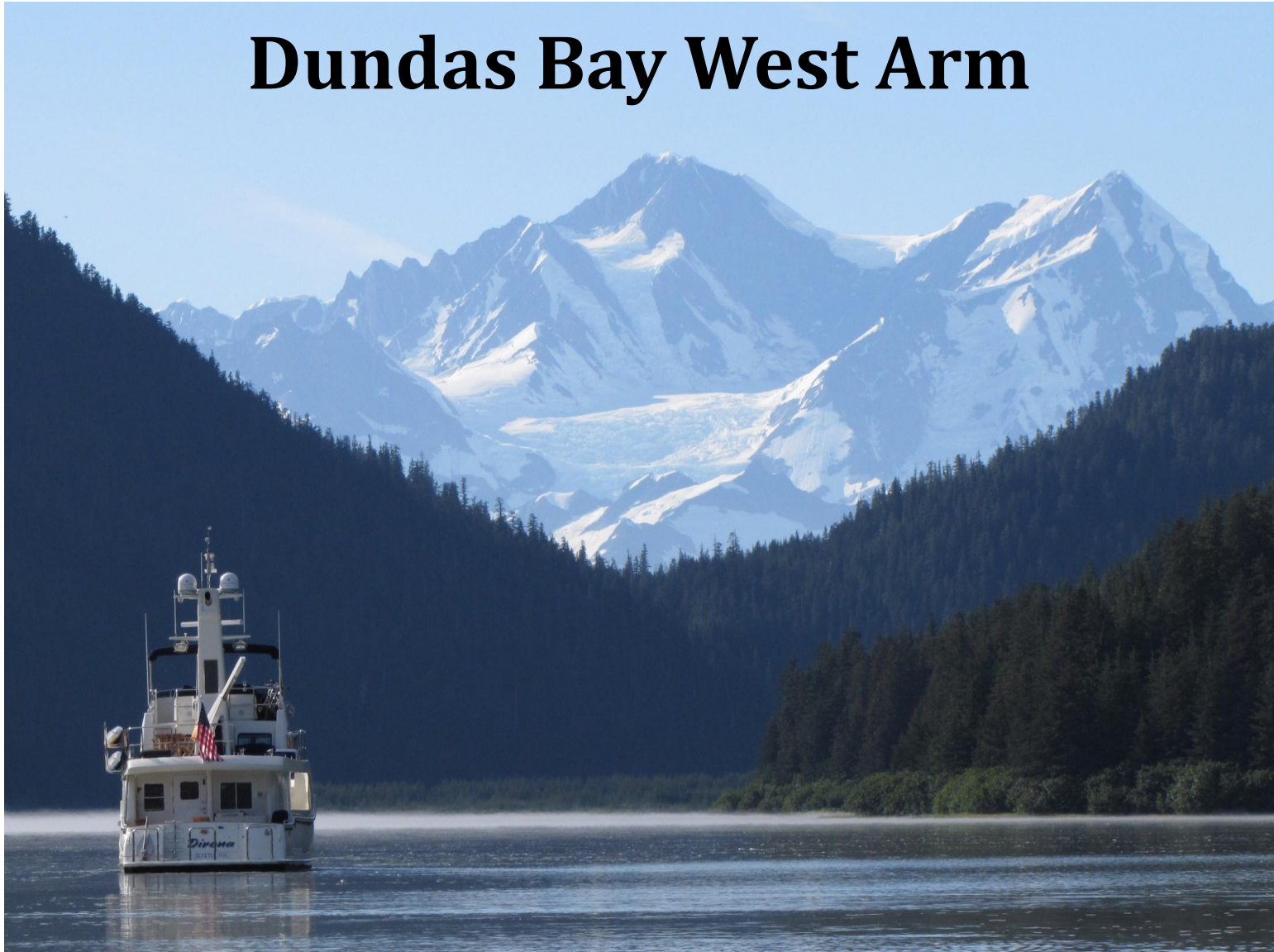




# Glacier Bay National Park



# Dundas Bay West Arm





# Dundas Bay East Arm





# Glacier Bay National Park



# Margerie Glacier

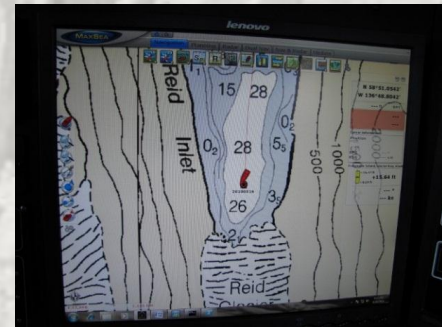




# John Hopkins Glacier

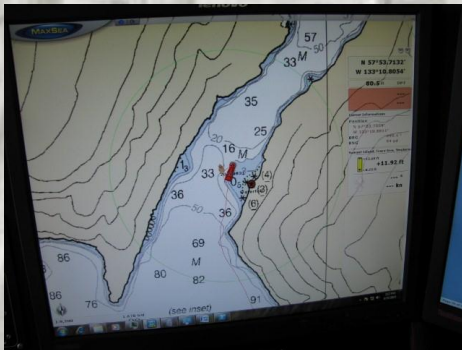


# Reid Inlet





# Tracy Arm

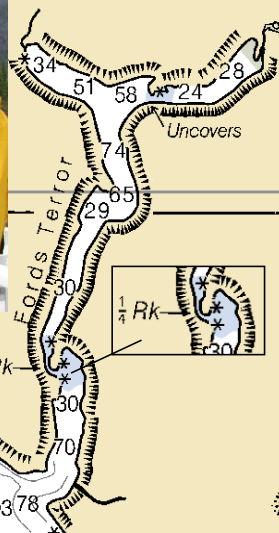




# South Sawyer Glacier, Tracy Arm



# Fords Terror





# Baranof



# Sitka





# Resources

- **blog.mvdirona.com**
  - Tips, techniques, events & destinations
- **www.mvdirona.com web site**
  - Technical and travel articles from *Pacific Yachting*, *PassageMaker* and others
  - Web stories
  - Web story/blog index
- ***Cruising the Secret Coast***
  - Emergency preparedness, anchoring, provisioning, and general tips
  - Northern BC destinations
  - Available at Armchair Sailor booth

