



4509 Somerset Place SE



Contemporary View Home!

Stylish contemporary daylight rambler with sweeping views of Seattle, Lake Washington, Olympic Mountains and Bellevue from nearly every room! The open spacious floor plan is designed to maximize the views and is great for entertaining. The living room and dining room feature new hardwood floors, cathedral ceilings and an expansive wall of windows with sliding door access to the wrap-around deck. The beautiful gourmet kitchen features slab granite counters, under cabinet lighting, large island with eating bar and generous cabinets and counter space. The family room is off the kitchen and has sliding door access to a private deck. The master suite is very spacious and features a walk-in closet and a luxurious master bath with marble counters and floor, oversized shower, skylight and jetted tub. A powder room completes the main floor.

The daylight lower level features a recreation room with sliding door access to a large deck, two bedrooms, 3/4 bath and a separate laundry room. Enjoy city, lake and mountain views from the recreation room and both bedrooms!

Additional features include double pane windows throughout, gas heat, central air conditioning, recent interior and exterior paint, new 40-year composition roof and cedar siding in 2008, three new ironwood decks provide 540 sf of outdoor living space, 2-car attached garage, and an outdoor garden shed. This wonderful home has been impeccably maintained and is in move-in condition. Sited on a quiet street on a very private 22,750 sf lot with mature landscaping-a rare opportunity for view and privacy in Somerset!

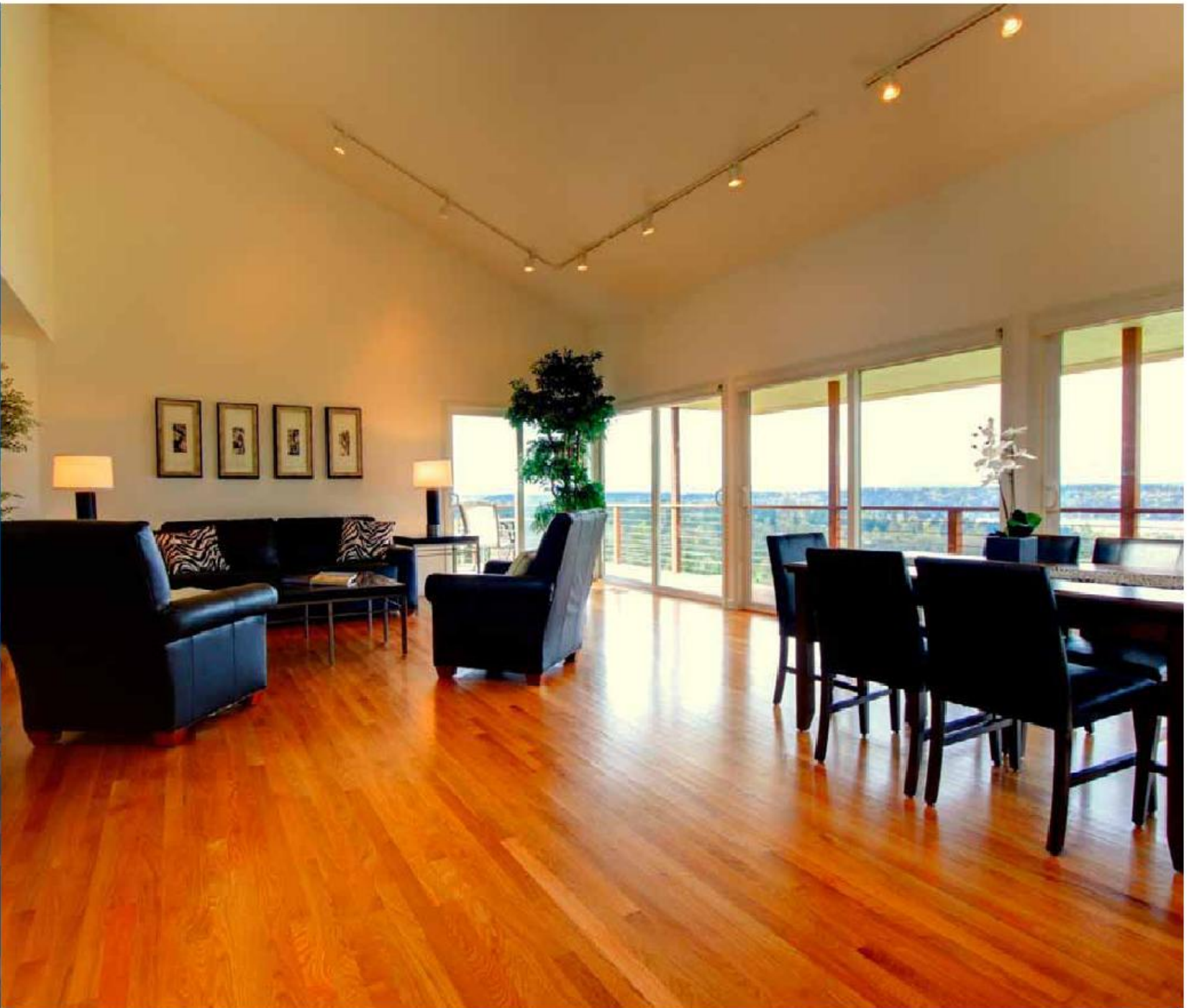
Quality Somerset Schools: Somerset Elementary, Tyee Middle School and award-winning Newport High School.

Somerset is an established Bellevue neighborhood of 1,350 homes located near I-405 and I-90. Convenient to shopping, the Newport Library, two community pools, tennis clubs and the new South Bellevue Community Center. Award-winning Bellevue schools, a well-maintained neighborhood and a strong Community Association make Somerset a great place to live!

\$950,000


Windermere





4509 Somerset Place SE



Mary Lee & Jeff Shaffer

(425) 941-4229 (Mary)

(425) 941-4900 (Jeff)

www.seattleplace.com

www.somersetson.com



Windermere Real Estate/Bdlevue Commons, Inc.
1200 112th Ave. NE, Suite B 100
Bellevue, WA 98004
425-462-8000
425-450-2600


Windermere

All information contained herein is supplied by the seller to the best of his/her knowledge, but is subject to verification by the purchaser, and the broker assumes no responsibility for the correctness thereof. In accordance with the law, this property is offered without respect to race, gender, color, creed, familial status, national origin or handicap.

Bedrooms:	3
Bathrooms:	2.25
Square Feet:	2,788
Year Built:	1976
Heat:	Forced Air Gas
Air:	Central
Living Room:	Hardwoods & Views!
Dining Room:	Hardwoods & Views!
Kitchen:	Gourmet & Views!
Family Room:	Main Floor with View
Master Bedroom:	Main Floor with View
Second Bedroom:	Lower Level - Views!
Third Bedroom:	Lower Level - Views!
Views:	City, Lake, Mountain
Roof:	New 40-Year Comp
Garage:	2-Car Attached
Lot Size:	22,750 sf Private
Fireplace:	Living Room
Floors:	Hardwood, Carpet
Interior:	Upgraded Throughout!
Exterior:	New Decks & Siding
MLS Number:	29052474