



Cruising Prince William Sound



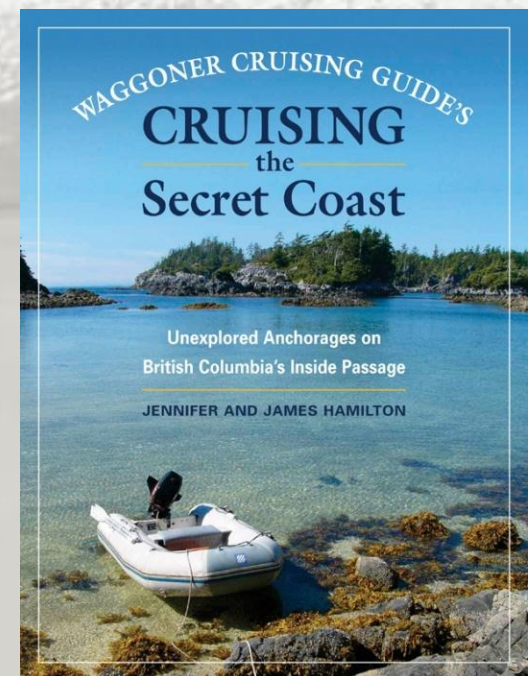
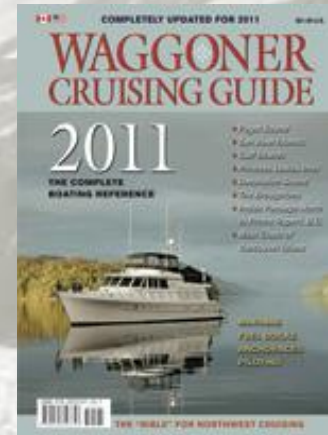
**James Hamilton (jrh@mvdirona.com)
Jennifer Hamilton (jennifer@mvdirona.com)
www.mvdirona.com**

Agenda

- **About us**
- **Offshore run**
- **Preparation and underway**
- **Prince William Sound highlights**

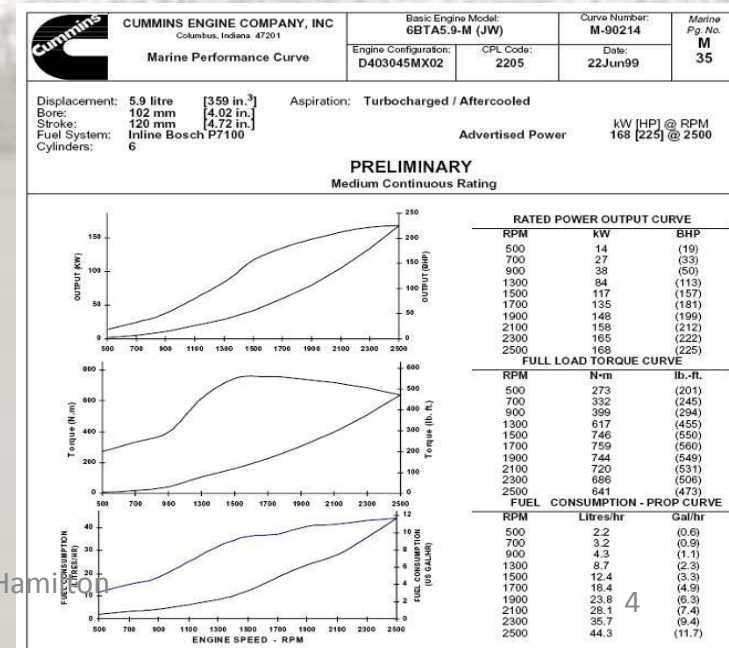
Boating background

- **Boat year-round in PNW**
 - Summer: west & north of Vancouver Island
 - Winter: up to Broughtons
 - Out most weekends
- **Explore & document little-publicized destinations**
- **Want independence, flexibility & self-sufficiency**



Previous boat

- **Bayliner 4087**
 - Cummins 270B Diesels
 - 4,100 trouble-free hours over 11 yrs
 - Solid coastal cruiser, but no passage-maker
- **Specifications**
 - 77 gallons water
 - +20 gal portable
 - No water maker
 - 220 gallons diesel
 - Cruise speed 15 knots
 - 17 GPH
 - Range: ~12 hours & 180 nm
 - Low cruise 7.75 knots
 - < 3 GPH
 - Range: 55 hours, 425 nm

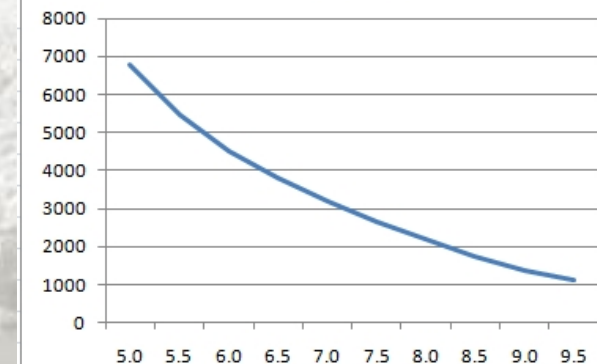


Dirona

- **2010 Nordhavn 52**
 - Delivered Feb, 2010
 - 1,400 hours on main engine
- **Specifications**
 - Main: Deere 6068AFM75 M2
 - Wing: Lugger L844D
 - Gen: Northern Lights 12kW
 - Diesel: 1860 gallons
 - Water: 400 gallons
 - LOA: 56' 4"
 - Beam: 16' 1"
 - Draft: 6' 7"
 - Displacement: 110,000 lbs



5263 Range

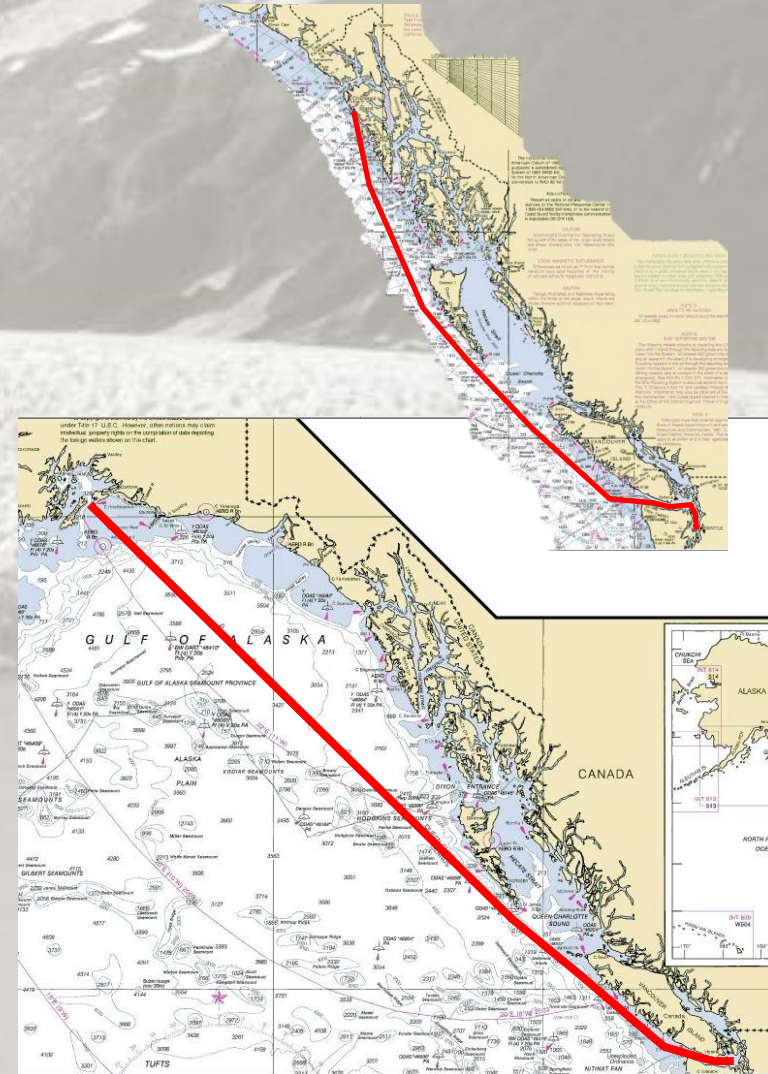


Agenda

- **About us**
- **Offshore run**
- **Preparation and underway**
- **Prince William Sound highlights**

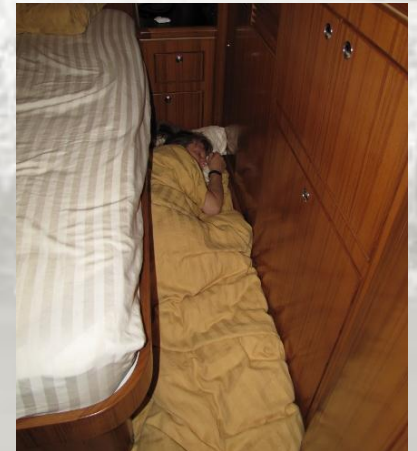
Choosing to run offshore to PWS

- **Prince William Sound long on our list of top destinations**
 - 1,200 nm minimum
 - Usually have < 4 wks vacation
- **New destination & more offshore experience**
 - 5-day offshore SE Alaska run last year
- **Ocean crossing with a pit stop**
- **Got 5 wks vacation**
 - 7 days there, 7 days back
 - 3 weeks to cruise PWS



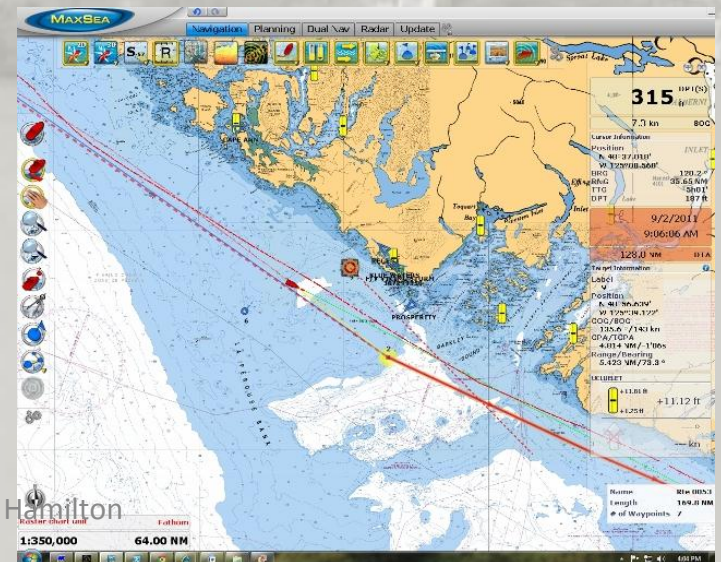
Weather and other conditions

- Later in year & schedule constrained
- Seattle to PWS
 - Gale-warning Strait of Juan de Fuca first night out, rough next 2 days
 - SE gale final 2 days:
 - 12' seas, gusts to 40kts
- PWS to Seattle
 - SE gale at start:
 - 13' seas, gusts to 59 kts
 - worst conditions we've encountered
- Less fog than SE Alaska run
- Little wood/debris in water



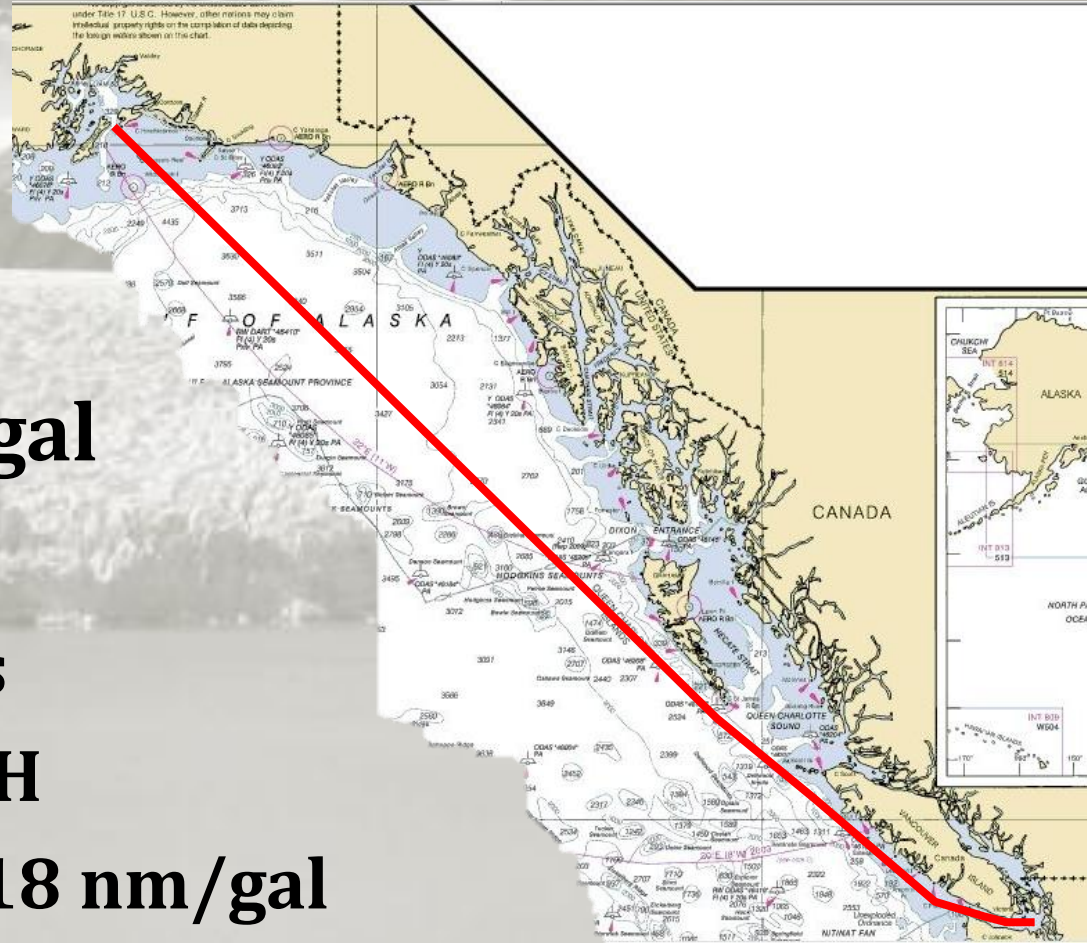
Vessel Traffic

- **Mostly in**
 - Strait of Juan de Fuca
 - Off Barkley Sound (SW Vancouver Island)
 - Queen Charlotte Sound (NW of Vancouver Island)
- **Little traffic otherwise until near PWS**
 - Occasional fishing vessel or cargo ship
 - Cruise ships in clusters
 - Russian tall ship *Pallada*
 - Majority broadcasting AIS

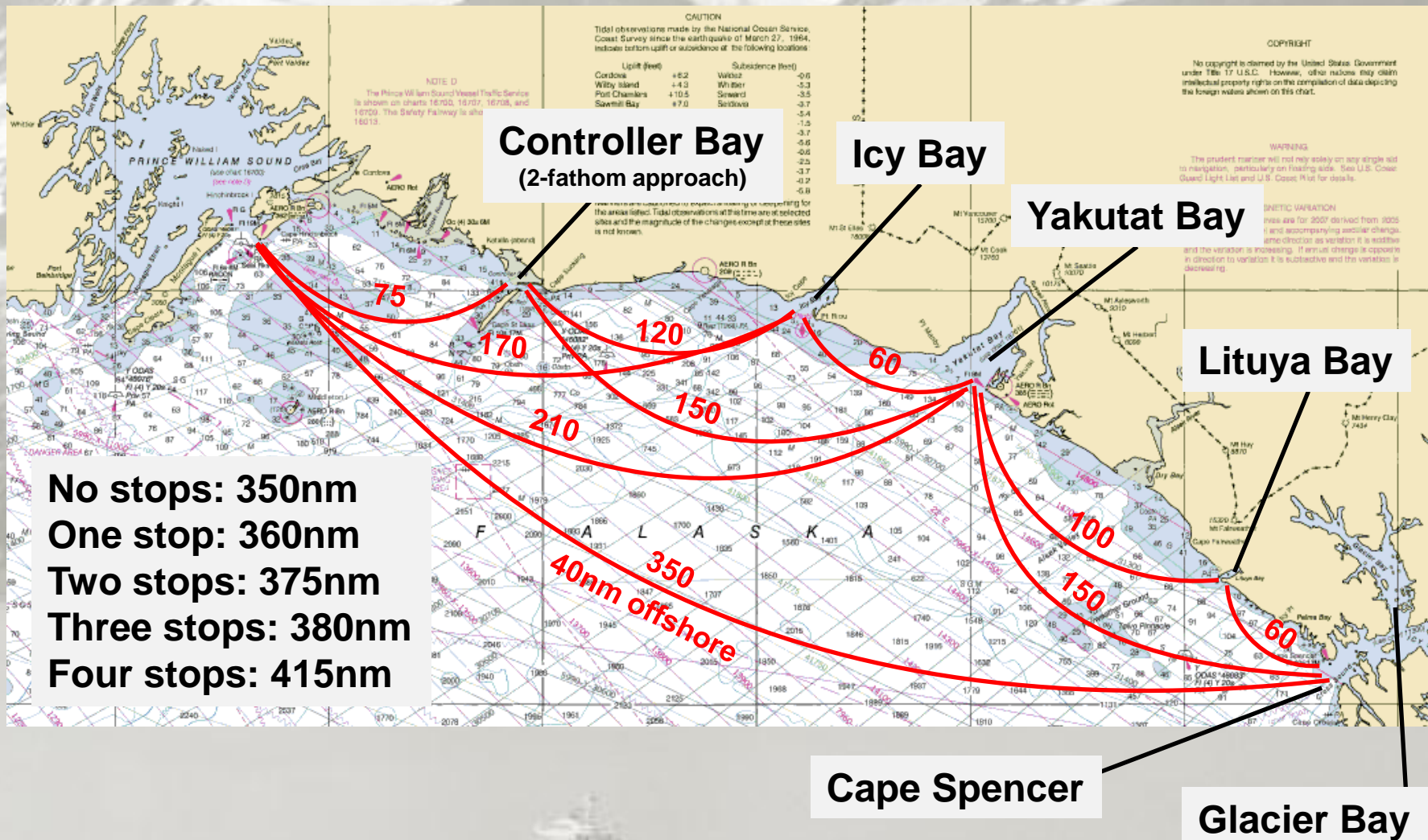


Offshore run stats

- **Total time: 166.7 hours (6.9 days)**
- **Total distance: ~1171 NM**
- **Fuel burn: 988.6 gal**
- **Averages:**
 - **Speed: 7.03 knots**
 - **Fuel burn: 5.9 GPH**
 - **Fuel economy: 1.18 nm/gal**
 - **Engine output: 117 HP**



Alternate Routes from SE Alaska



Agenda

- **About us**
- **Offshore run**
- **Preparation and underway**
- **Prince William Sound highlights**

Heavy weather preparation

- Storm plates & deadlights
- Pin anchor
- Ratchet straps for heavy items
 - On deck, engine room & laz
- Extra latches on heavy drawers
- Bubble wrap/nerf balls for galley lockers
- Refrigerator bars
- Silicone baking mats



Night running

- Good radar with AIS & ARPA
- Shields for steaming & flood lights
- Heavily tinted display covers on PH control panels
- Red lights in PH, day head, galley
- Red flashlights



Watchkeeping

- **Someone always awake & at helm**
 - 3 formal 3.5-hour shifts at night
 - 8:00pm-11:30pm-3:00am-6:30am
 - Previously did 4-hour shifts
 - Informal during day
- **Slept entirely in master stateroom**
 - Partly less motion, but also on-watch person can be less careful on noise
 - Previously mostly used off-watch berth
- **Watch Commander Pro watch alarm**
 - Flashing light → beep → siren
 - We modified for quieter initial beep
- **Engine room checks every shift change**



Seasickness

- **Generally not a problem**
- **Jennifer will get seasick if conditions very rough**
- **James seasick for first time ever on return trip**
- **Both still functional, but couldn't hold down food/liquids**
 - **Wore scopolamine patch for that period**



Spitfire

- **Did well, mostly slept**
- **Severe boat motion scares him**
 - Blanket to wrap up/hide in helped
- **Loved graveyard shift**
 - Floodlight in fog attracted birds
- **Can get seasick if rough**
 - Restricted food intake to small amounts throughout day
- **“Front, front, hinds” for stairs**

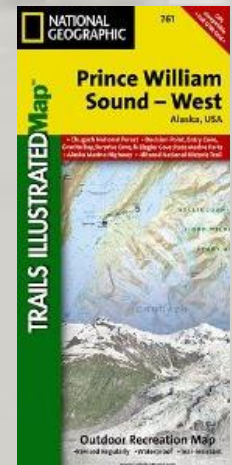
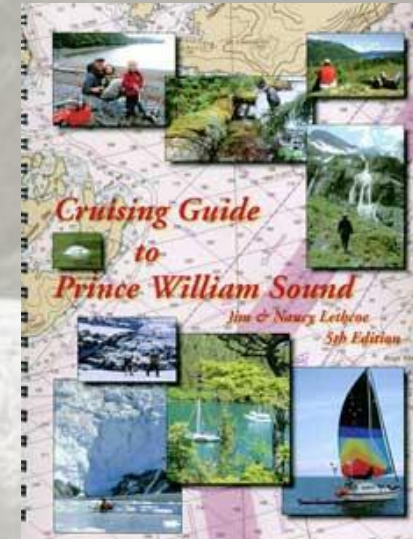
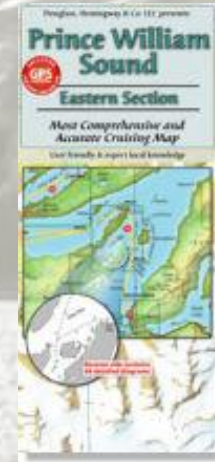


Agenda

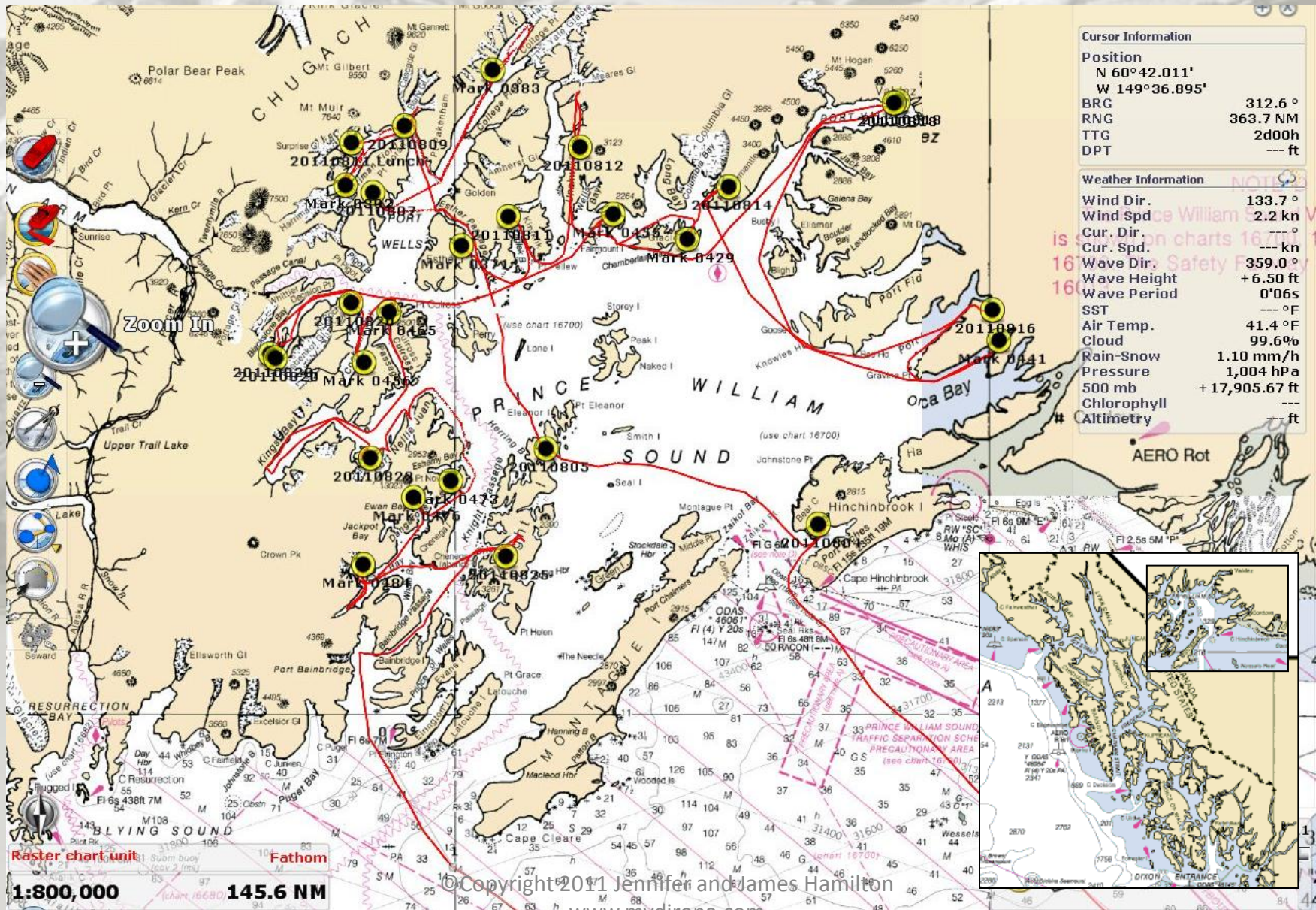
- **About us**
- **Offshore run**
- **Preparation and underway**
- **Prince William Sound highlights**

Cruising Guides & Resources

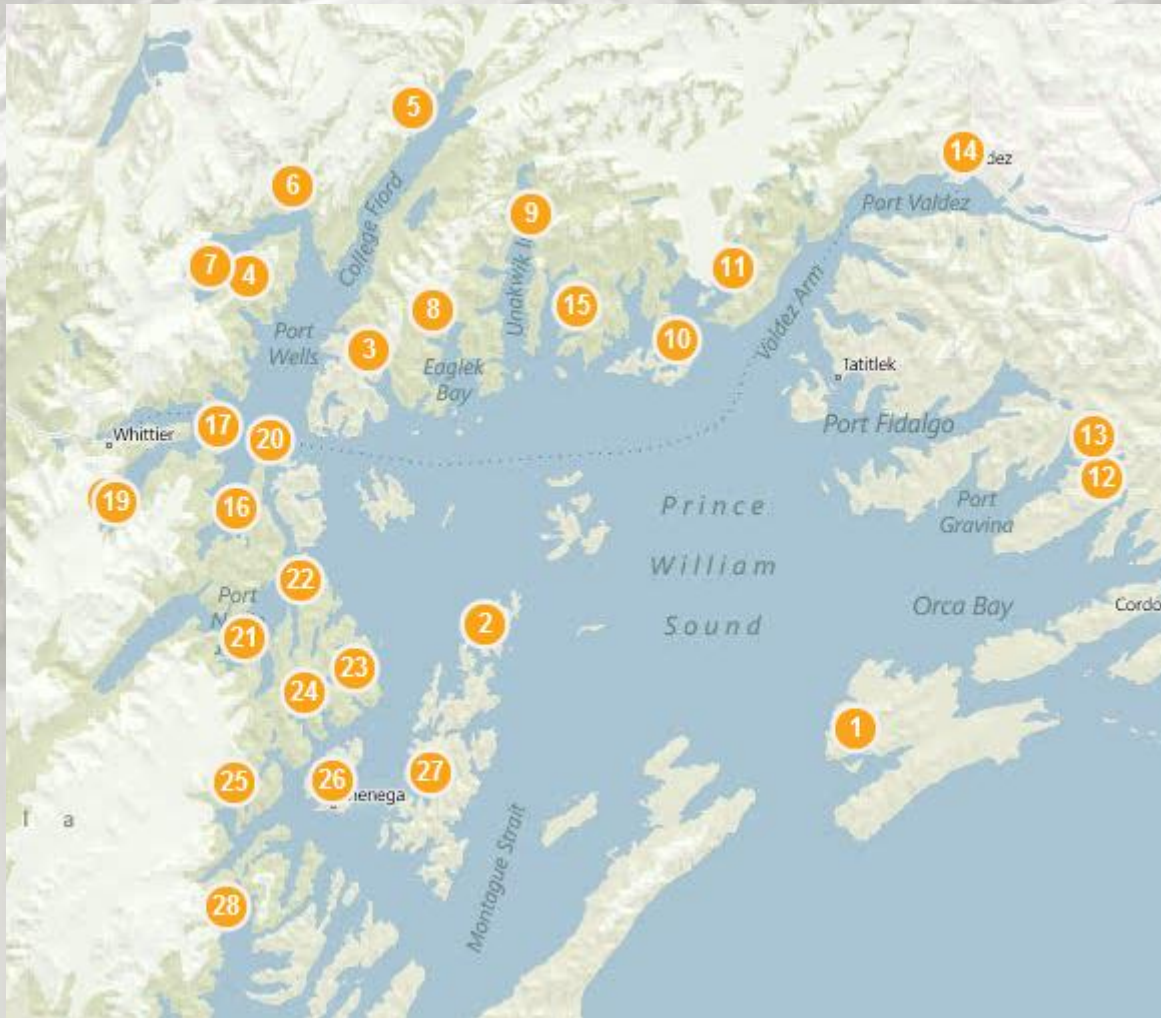
- *Cruising to Prince William Sound*
- *Coast Pilot 9: Cape Spencer to Beaufort Sea*
- **Fine Edge Cruising Planner maps**
- **National Geographic Trails maps**



Overview

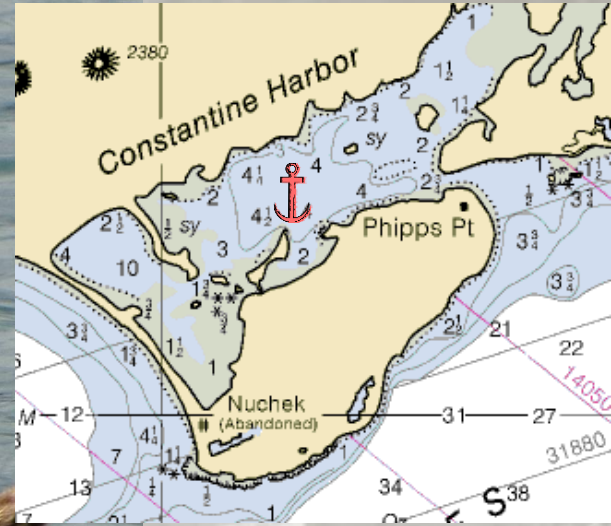


Destinations



1. Constantine Harbor
2. Disk Cove
3. Shoestring Cove, Esther Passage
4. Bettles Lagoon
5. Wellesley Cove
6. Doran Strait
7. Harriman Glacier
8. Cascade Bay
9. The Cow Pens
10. Growler Bay
11. Jade Harbor
12. Sheep Bay
13. Beartrap Bay
14. Valdez Small Boat Harbor
15. Granite Bay
16. Three Finger Cove
17. Surprise Cove Marine State Park
18. Northland Glacier, Blackstone Bay
19. Beloir Glacier, Blackstone Bay
20. Carrs Cove
21. Nellies Rest
22. Port Nellie Juan Cannery
23. Granite Bay
24. Ewan Bay
25. Princeton Retreat, Nassau Fiord
26. Old Chenega Village
27. Mallard Bay
28. Bainbridge Glacier

Constantine Harbor

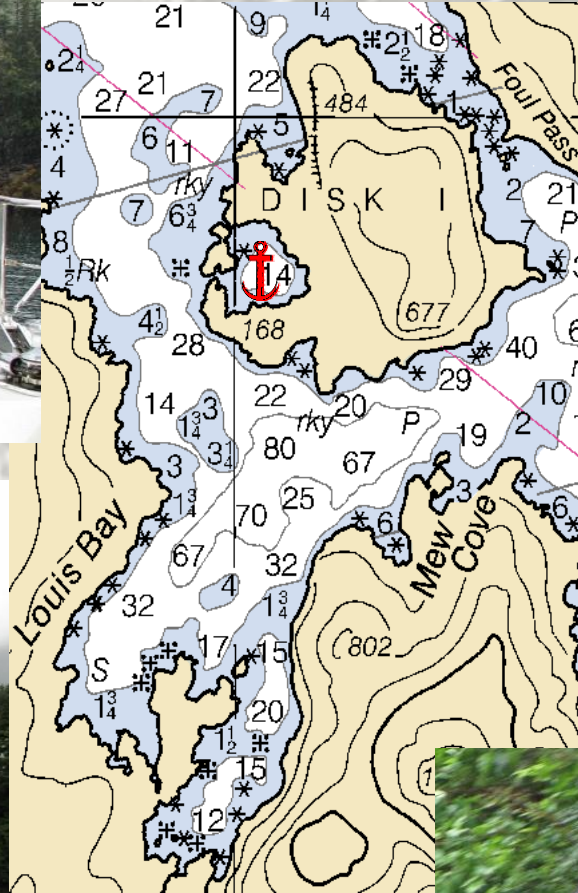


10/20/11

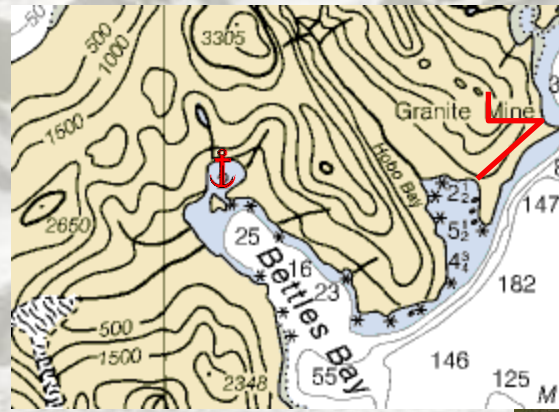
©Copyright 2011 Jennifer and James Hamilton

www.mvdirona.com

Disk Cove



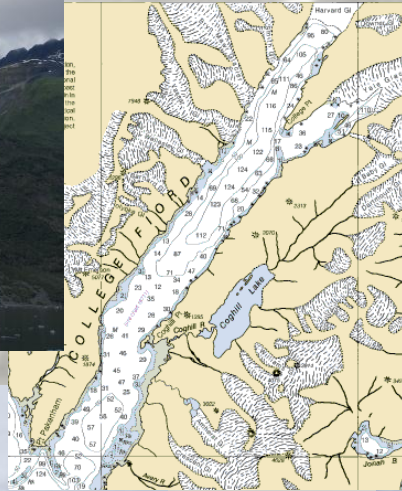
Bettles Lagoon

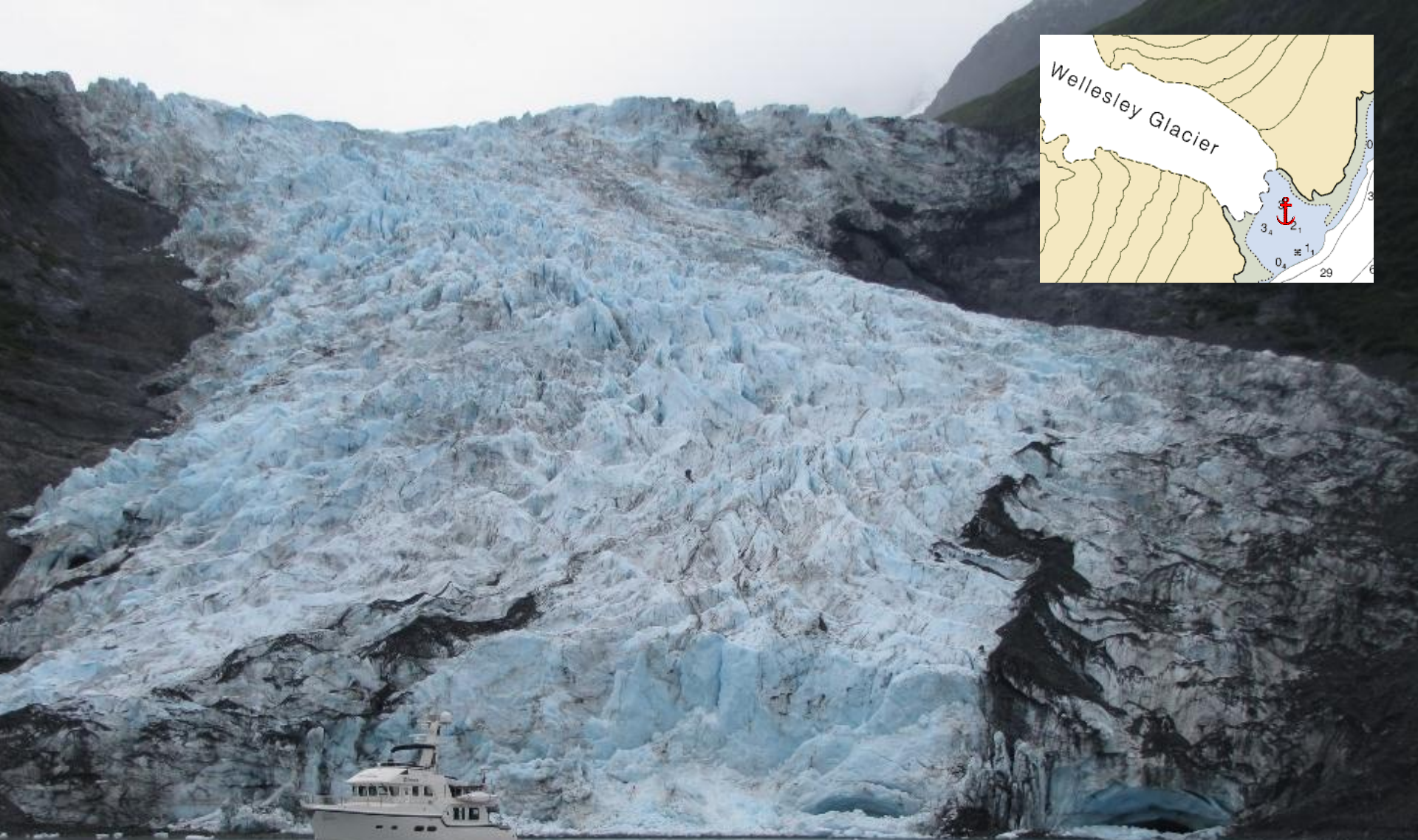


10/20/11

©Copyright 2011 Jennifer and James
www.mvdirona.com

Harvard Glacier, College Fjord

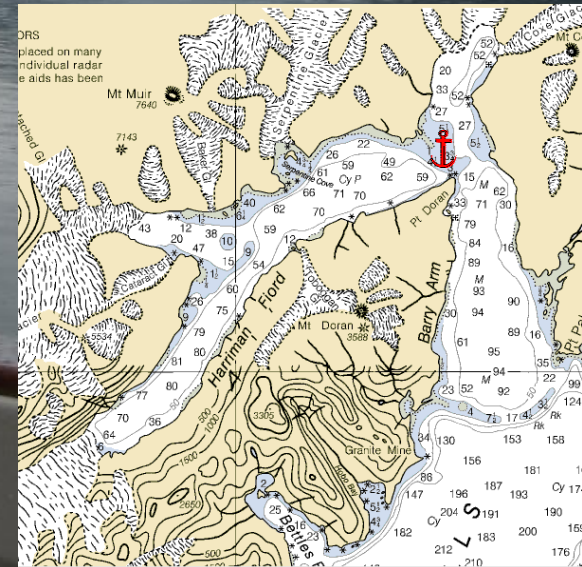
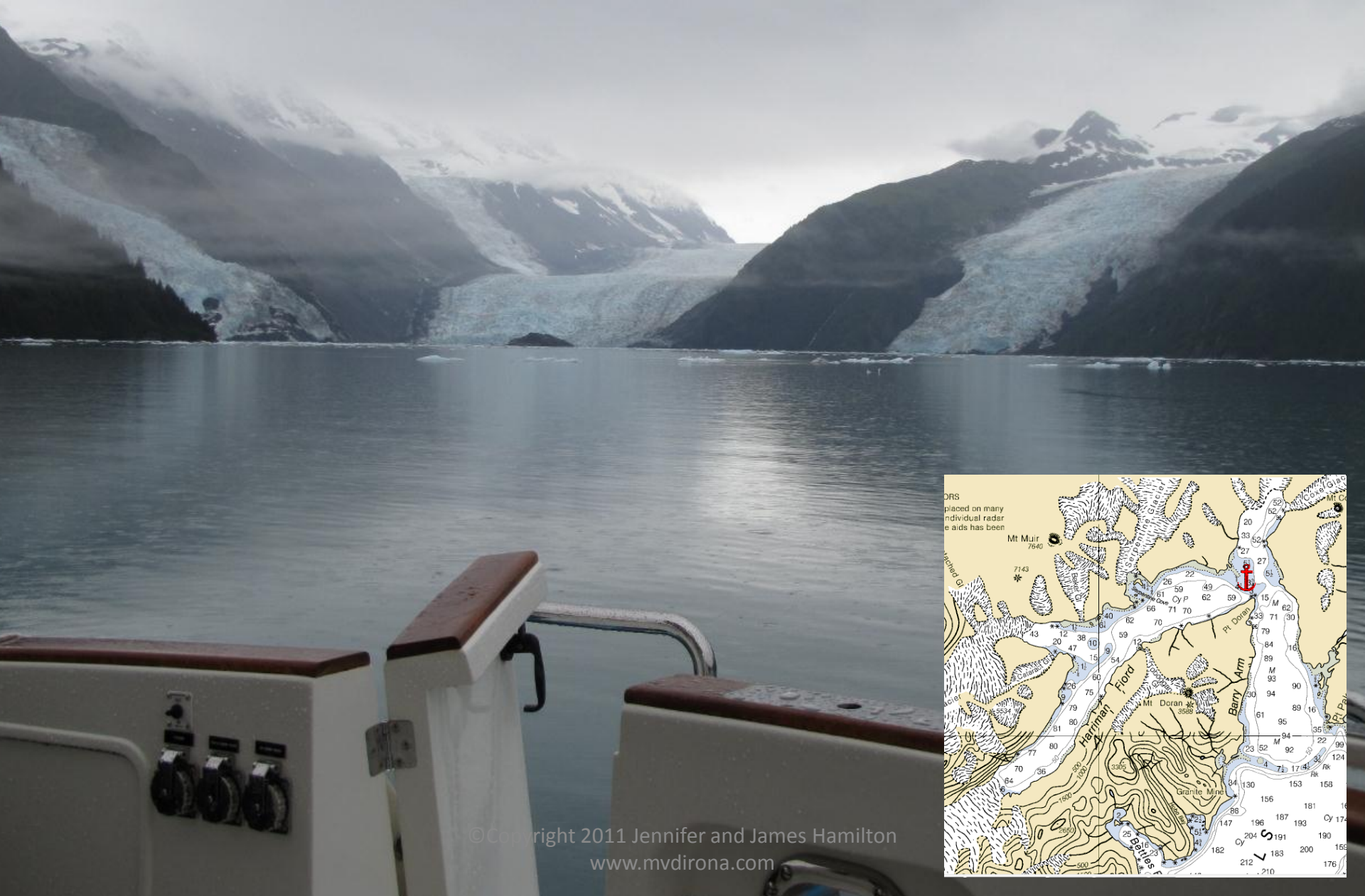




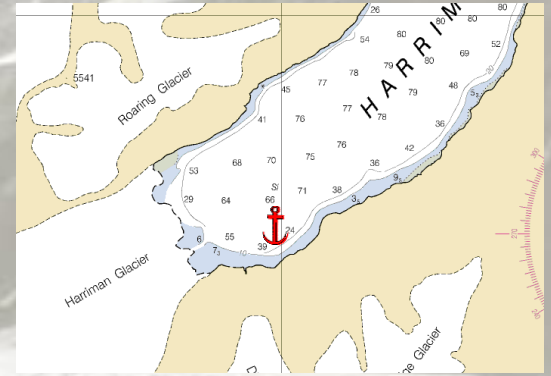
Wellesley Cove, College Fiord

© copyright 2014 by Richard James Hamilton
www.riviera.com

Doran Strait, Harriman Fiord



Harriman Fiord & Glacier



10/20/11

©Copyright 2011 Jennifer and James Hamilton
www.mvdirona.com



Bowpickers in Esther Passage



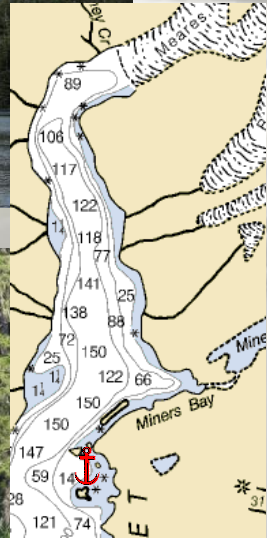
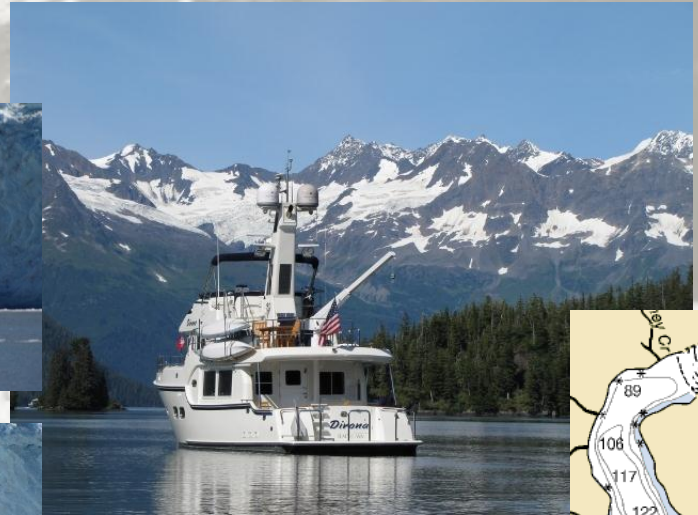
10/20/11

©Copyright 2011 Jennifer and James Hamilton
www.mvdirona.com

Cascade Bay

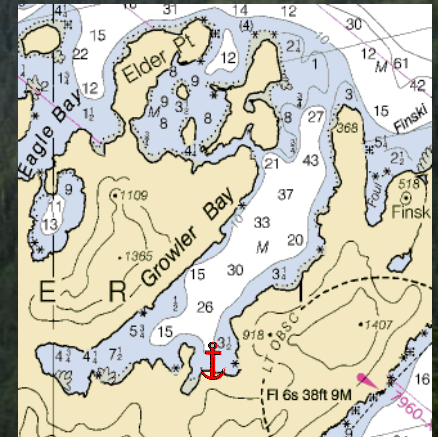
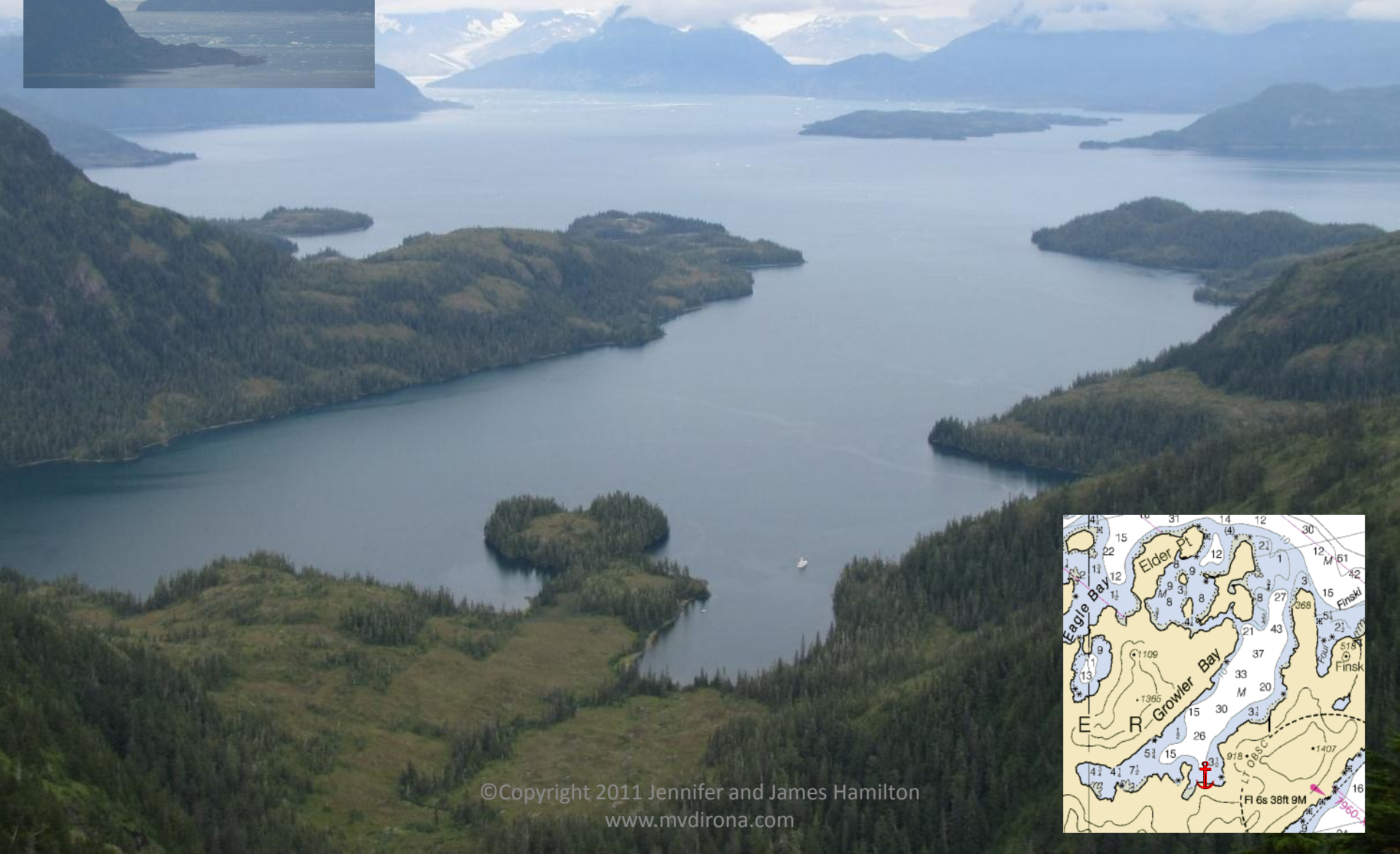


Cow Pens & Meares Glacier

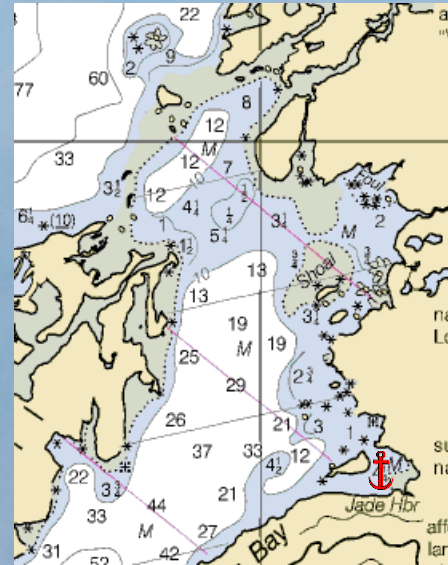


10/20/11

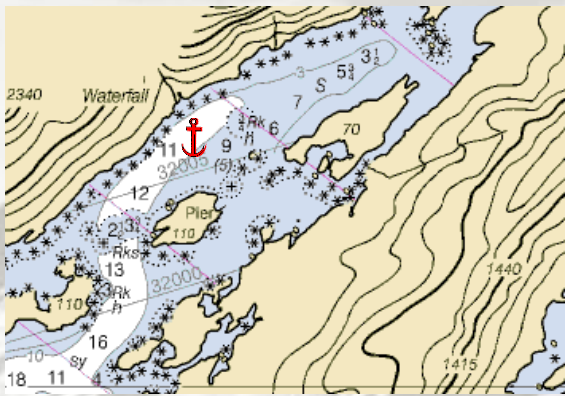
Growler Bay



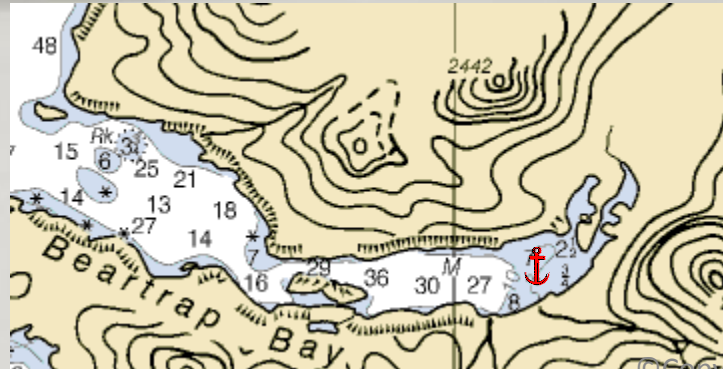
Jade Harbor



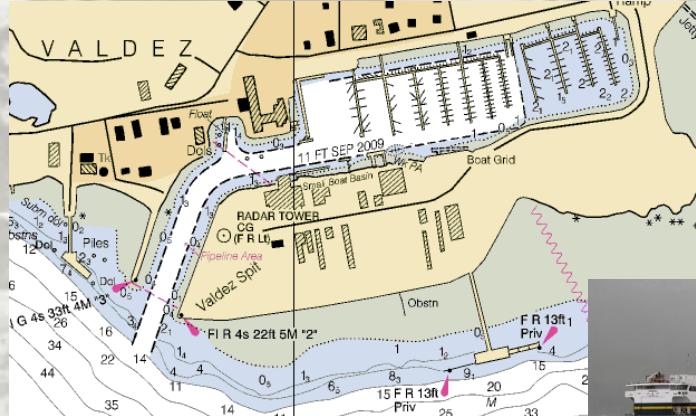
Sheep Bay



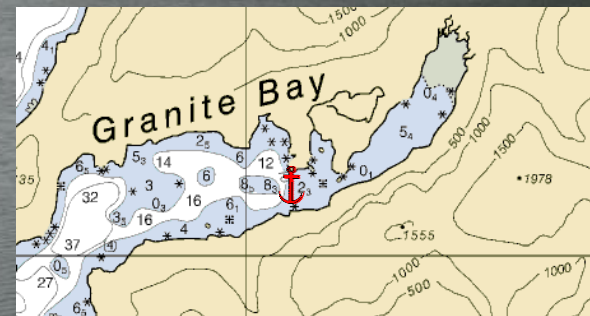
Beartrap Bay



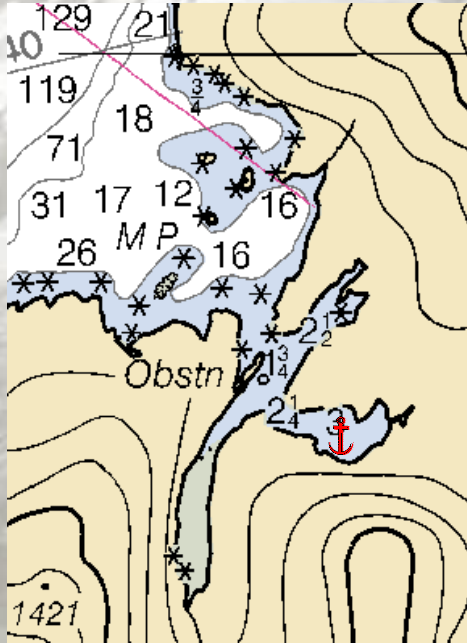
Valdez



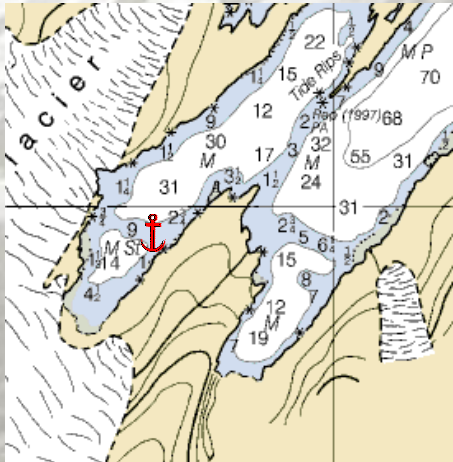
Granite Bay



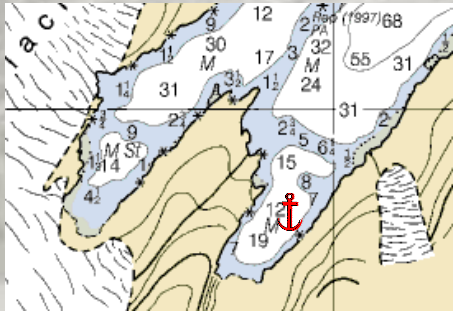
Three Finger Cove



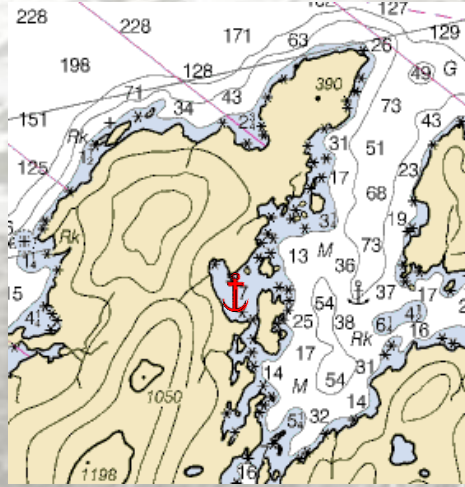
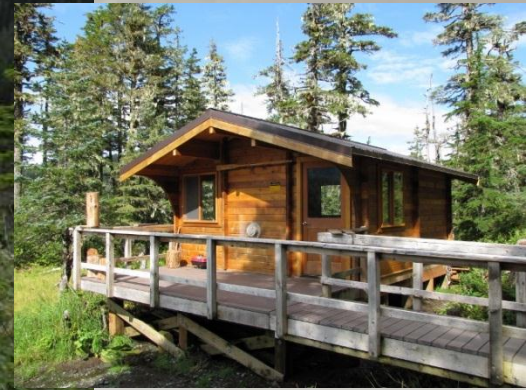
Blackstone Bay



Beloir Glacier



Carrs Cove



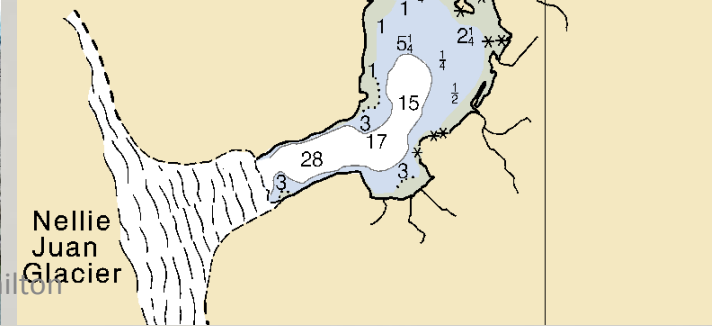
10/20/11



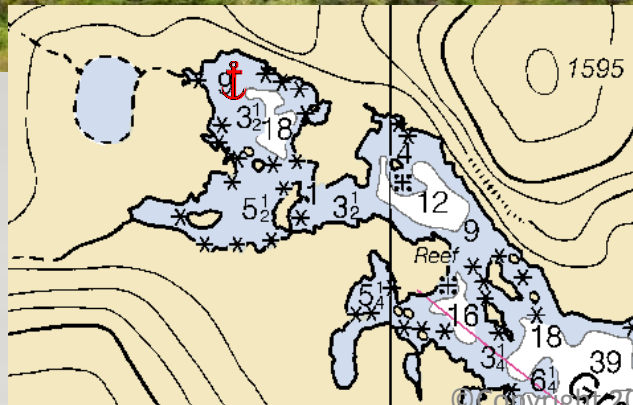
Nellies Rest



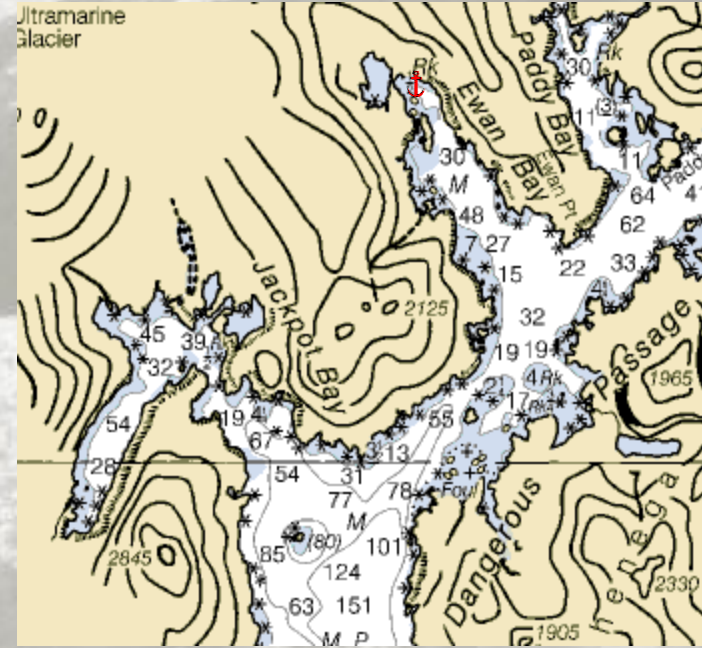
Entrance to Nellie Juan Lagoon is under a rock overhang at low tide, however, it is navigable by small craft at higher tides. Local knowledge is recommended. Numerous bergy bits can be expected inside the lagoon.



Granite Bay



Ewan Bay



Bainbridge Glacier

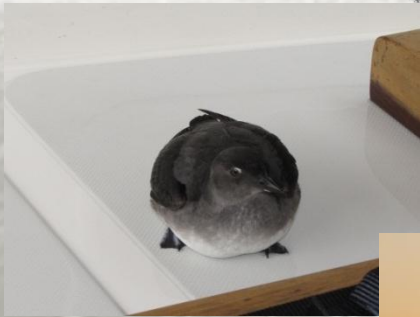
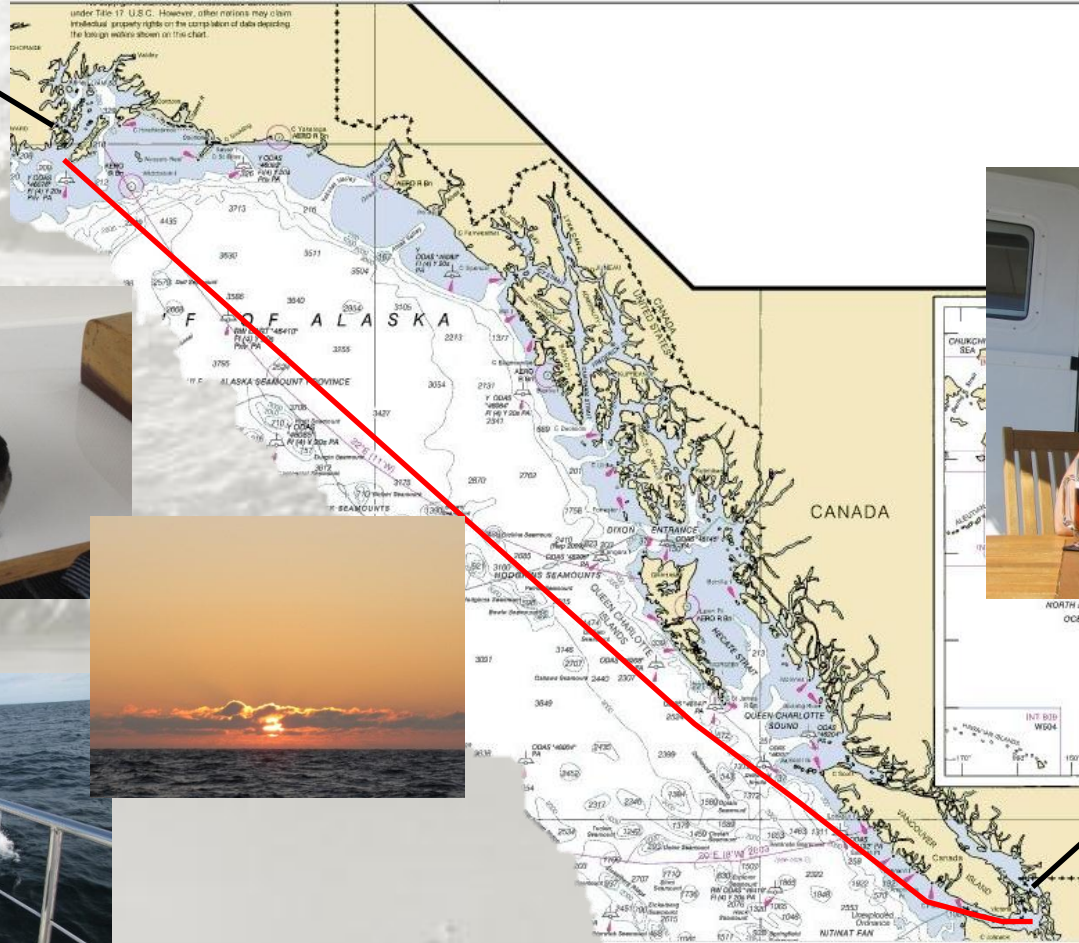


©Copyright 2011 Jennifer and James Hamilton

www.mvdirona.com

Return run

Mallard Bay



Echo Bay,
Sucia Island

Resources

- www.mvdirona.com/blog.mvdirona.com
 - Tips, techniques, events & destinations
 - *Dirona* build and design details
 - Technical and travel articles from *Pacific Yachting*, *PassageMaker* and others
- *Cruising the Secret Coast*
 - Emergency preparedness, anchoring, provisioning, and general tips
 - Northern BC destinations

